



Citizenship and
Immigration Canada

Citoyenneté et
Immigration Canada



Modernizing the CIC Settlement Program

Citizenship and Immigration Canada
BUILDING A STRONGER CANADA



Citoyenneté et Immigration Canada
BÂTIR UN CANADA PLUS FORT

Canada 

Outline

- Context
- Overview of Modernized Approach
- Program Logic Model
- Eligible Clients



Barriers to successful settlement

- Official language ability
- Labour market integration:
 - Credential recognition
 - Canadian work experience
 - Workplace communication skills
- Lack of accurate and timely information
- Social networks and engagement

Two types:

- Individual level
 - Language abilities
 - Life skills
 - Community networks
- Systemic barriers
 - Credential recognition
 - Recognition of work experience
 - Workplace culture



www.cic.gc.ca



Settlement Programming: Modernized Approach

Aims to improve settlement outcomes for newcomers by:

- enhancing flexibility, coordination and responsiveness in programming to better meet newcomer needs;
- strengthening and more clearly demonstrating the link between settlement activities and improved newcomer outcomes;
- improving planning and assessment activities.



www.cic.gc.ca

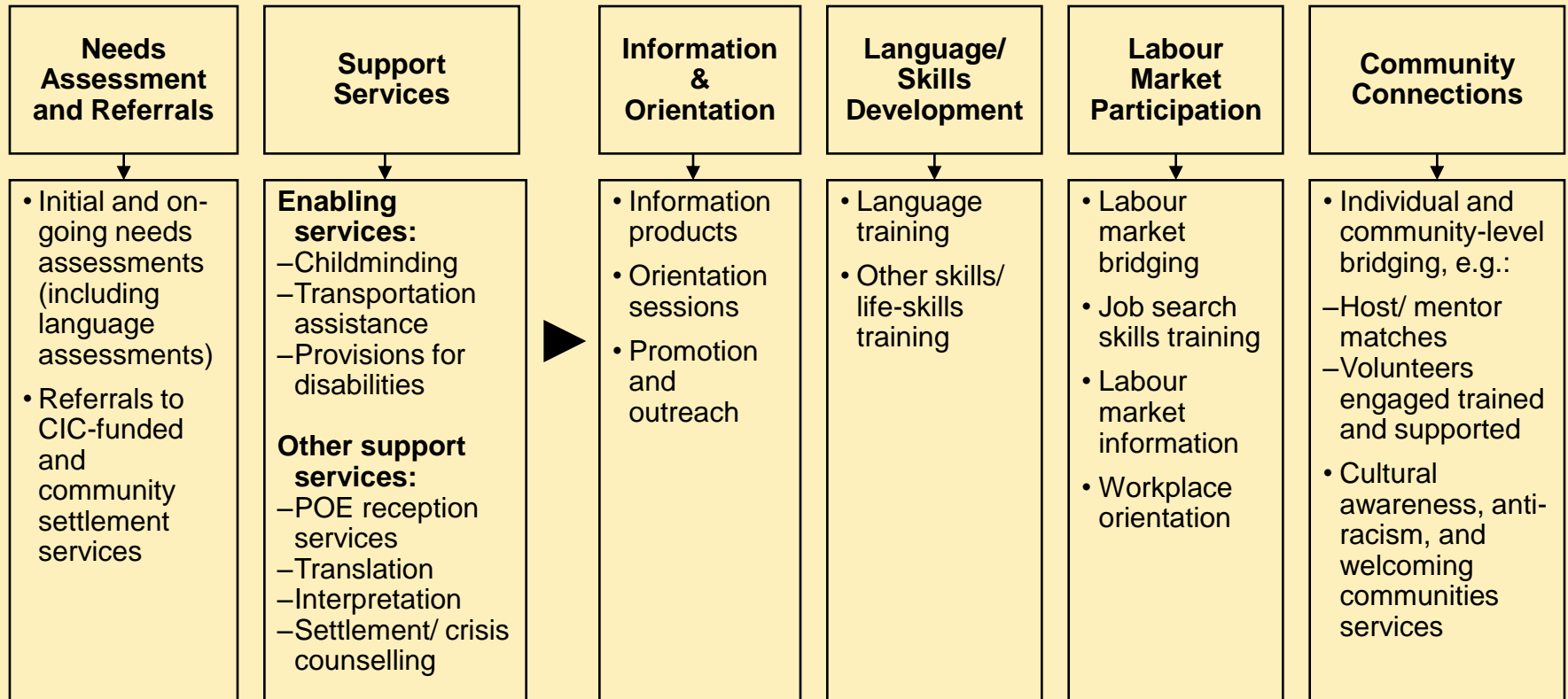


One Settlement Program - Six Themes

- Settlement programs and services have been regrouped under a single program authority with six themes to make it easier for immigrant serving agencies to provide newcomers with the best combination of services for their needs.
- Several themes can be combined to reach outcomes
- Builds on LINC, ISAP, Host, but provides more flexibility to combine activities
- Activities previously eligible under LINC, ISAP, Host remain eligible.



Settlement Services



www.cic.gc.ca

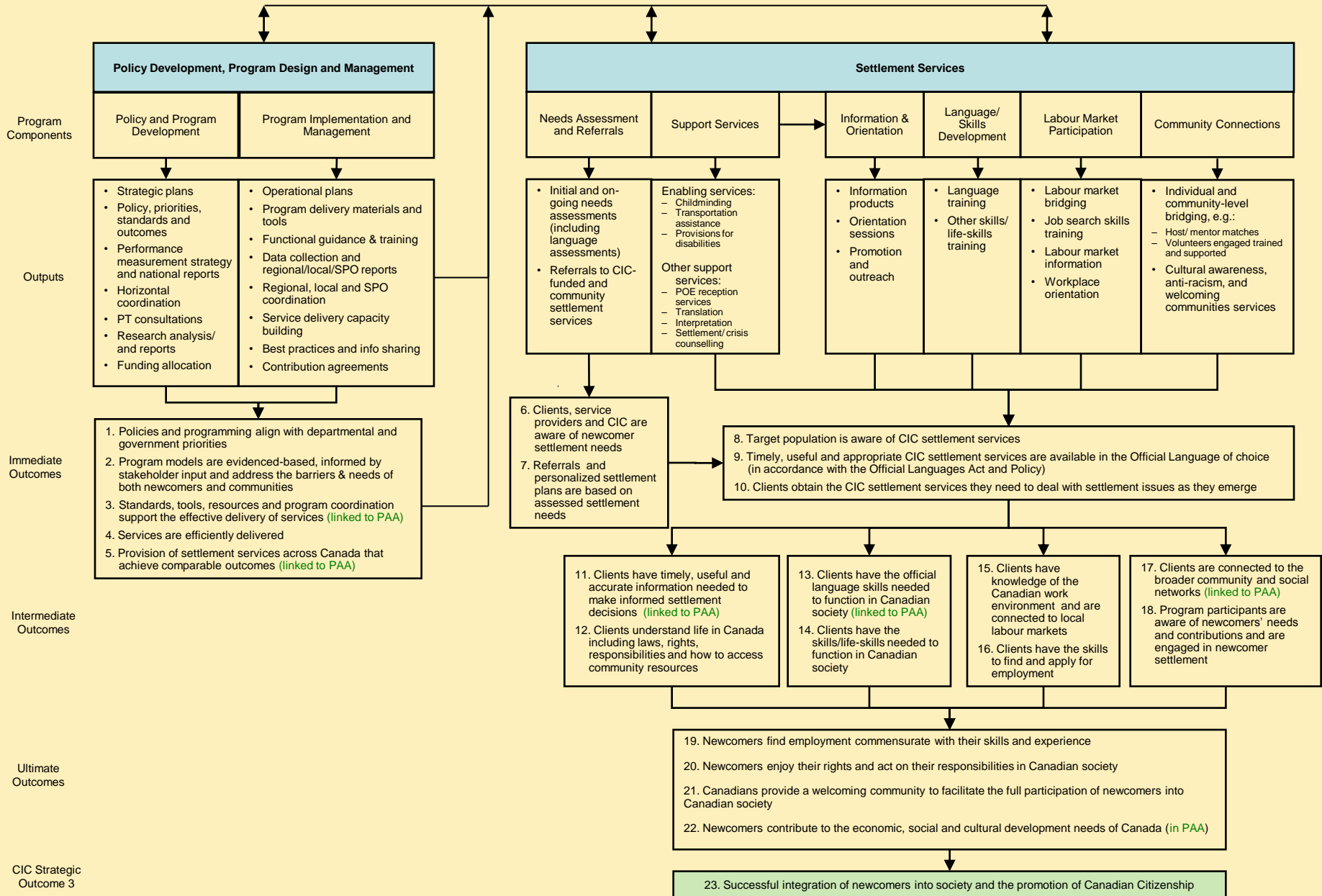


Definition of Logic Model

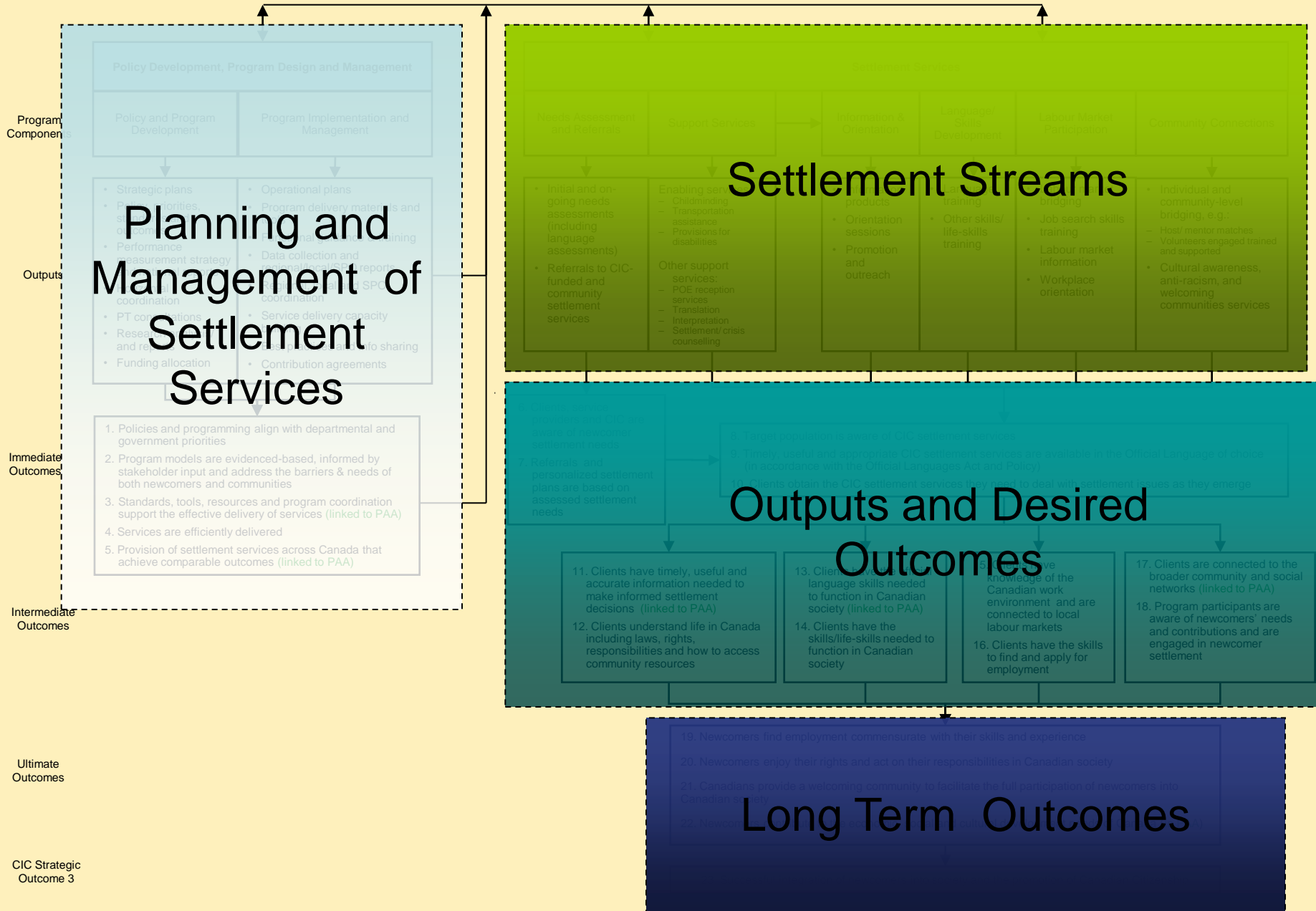
A logic model identifies causal linkages between the activities of a policy, program, or initiative, the outputs, and the achievement of its outcomes.



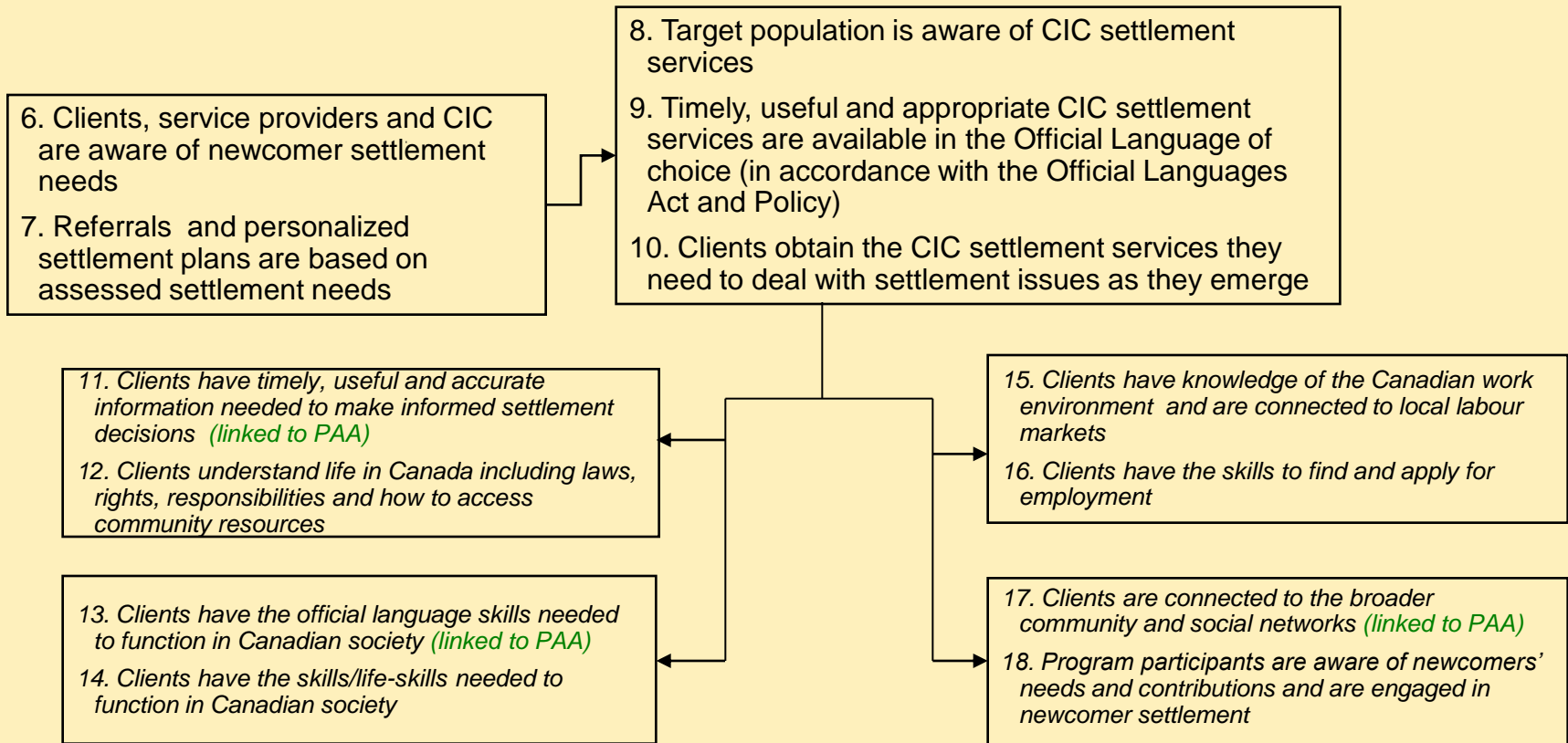
CIC Settlement Programming Logic Model



CIC Settlement Programming Logic Model



Primary Focus - Improving Outcomes



Long-term Outcomes

19. Newcomers find employment commensurate with their skills and experience

20. Newcomers enjoy their rights and act on their responsibilities in Canadian society

21. Canadians provide a welcoming community to facilitate the full participation of newcomers into Canadian society

22. Newcomers contribute to the economic, social and cultural development needs of Canada (in PAA)

23. Successful integration of newcomers into society and the promotion of Canadian Citizenship

Achieving these outcomes goes beyond the initial settlement experience

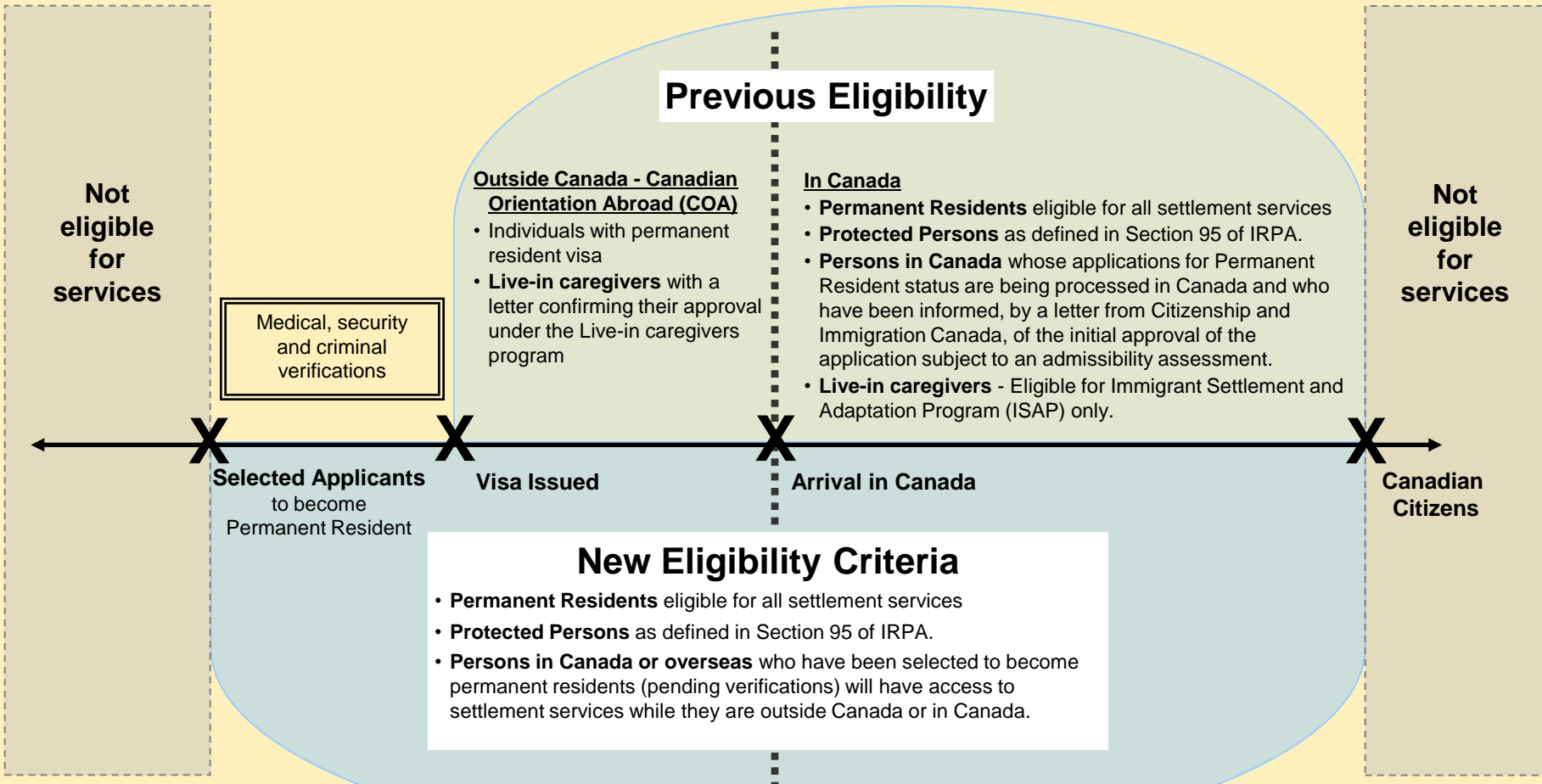


Eligible Clients

- **Only** the persons listed in the Terms and Conditions are eligible to receive settlement services. Eligible persons include both the principal applicant and eligible dependants (spouse and children).
- Some newcomers in the process of becoming permanent residents will be eligible for services once they have been **approved in principle** pending the following verifications:
 - Medical,
 - Security, and
 - Criminal.
- Canadian citizens, refugee claimants and Temporary Foreign Workers are **not eligible** for the CIC settlement program services.
- To access language training, persons must be of legal school-leaving age within their applicable province or territory.



Access to Settlement Services - Previous Eligibility and New Criteria



Notes:

- To access the language program, persons must be of legal school-leaving age within their applicable province or territory.
- Live-in caregivers remain eligible for Canadian Orientation Abroad, as well as services formerly offered under the ISAP program in Canada. They remain ineligible for language services, until/unless approved in principle for permanent residency. At that point they are eligible for all settlement services.





Citizenship and
Immigration Canada

Citoyenneté et
Immigration Canada



Citizenship and Immigration Canada
BUILDING A STRONGER CANADA



Citoyenneté et Immigration Canada
BÂTIR UN CANADA PLUS FORT

Thank You · Merci

Canada 

Eligible Costs - Services

- Must remain within the broad program themes
 - a) Needs assessment and referrals
 - b) Support services
 - c) Information and orientation
 - d) Language and skills development
 - e) Labour market participation
 - f) Community connections
- For greater clarity, eligible services also include services to support initiatives that contribute to the strengthening of the settlement sector such as activities to share best practices and enable a better understanding and communication within the settlement sector to enhance settlement services.
- They do not include services to the general public that normally fall within the mandate of provincial governments, such as health and education services.



www.cic.gc.ca



Eligible Costs – Expenditures

- Does not restrict what was permitted before.
- Combine what was already allowed and avoid duplication.
- Can now cover volunteers' travel related costs.
- Childminding and transportation assistance costs can be applied to all services.
- No financial assistance (except transportation and childminding costs) will be paid to eligible clients.
- Costs associated with validation of individuals' credentials are not eligible.
- Profit is neither a “cost” nor an “expense” and therefore may not be included in the eligible costs.



Eligible Costs – Capital Expenditures

- Capital expenditures mean eligible and **necessary costs in the opinion of the Department** that the Service Provider expects to incur and pay for capital assets (such as computers, furniture, and other tangible property) purchased and/or leased. It also include leasehold improvements (refer to the definition used by the Canada Revenue Agency), and costs for arrangements and devices for eligible clients with disabilities.
 - The portion related to arrangements and devices for eligible clients with disabilities cannot exceed \$10,000 per disabled client up to a maximum of \$100,000 per year per agreement unless otherwise approved by CIC to respond to clients' needs.
- Under the new *Terms and Conditions*, the maximum allowable amount for capital expenditures can be up to 15% of the total value of the agreement, up from the existing 10% maximum. In the case of a multi-year agreement, new flexibility also allows for capital expenditures to exceed 15% per year so long the amount deducted is the lesser of:
 - The unclaimed total agreement capital expenditure amount **OR** 50% of the annual contribution value.

Note: The amount must spent and claimed in the same fiscal year.

